

# **FOCUS ON FAITH** **Faith Lutheran Church**

N35 W6621 Wilson Street, P.O. Box 246, Cedarburg, Wisconsin 53012  
Office Phone: 262-377-0960 Fax: 262-377-1509  
Website: [www.faithlutherancedarburg.com](http://www.faithlutherancedarburg.com)  
Email: [faithchurchkathy@wi.rr.com](mailto:faithchurchkathy@wi.rr.com)



# **2011**

**Saturday at 5:30 pm:** Taize` Service  
**Sunday at 9:00 am:** Worship / Communion  
**Sunday at 10:15 am:** Sunday School & Coffee Hour

FAITH LUTHERAN CHURCH -ELCA  
N35 W6621 Wilson Street  
P.O. Box 246  
Cedarburg, Wisconsin 53012-0246

**Change of Service Requested**

**T**ouched, we  
**I**nvoke,  
**E**quip and  
**S**end people in Jesus' name.

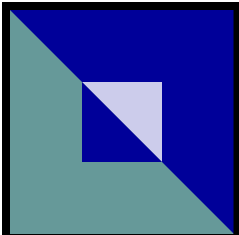
# PARTICIPATION SCHEDULE

## September 2011

DATE	TIME	ASSISTANT MINISTER	PRAYERS OF THE CHURCH	READER	CUP DEACON	ACOLYTES	GREETERS
Sunday, September 4	9:00 a Communion						
Sunday, September 11 Rally Day	9:00 a Communion						
Sunday, September 18	9:00 a Communion						
Sunday, September 25	9:00 a Communion						

PLEASE MARK YOUR CALENDAR -

DO NOT DEPEND ON A REMINDER!!!LET THE OFFICE KNOW OF ANY CHANGES



# Focus on Faith

Faith Lutheran Church

September 2011

## Staff

**Pastor:** John C. Norquist

**Youth & Family Ministries:** Toni Schnorr

**Office Manager:** Kathy Thiele

**Bookkeeper / Office Assistant:** Judy Gronbach

**Sanctuary Choir Director:** Tom Christie

**Celebration Director:** Stephen V. Hibbard

**Financial Secretary:** Lois Krueger

**Treasurer:** John Schnorr

**Newsletter:** Ryanne & Patrick Lee

**Custodians:** Gary & Kathy Gilstrap

## Officers

**President:** Lois Krueger

**Vice President:** Bob Becher

**Secretary:** Vonna Pitel

## Committee Representatives

**Church in Society:** Jerry Gierach

**Communications & Evangelism:** Vonna Pitel

**Fellowship/Ministry Care:** Kris Papke

**Finance Advisory:** Lois Krueger, Bob Becher

**Fundraising:** Jeff Fischer, Brad Hallmark

**Music & Worship:** Dottie Dorr

**Parish Education:** Amy Canapa

**Personnel:** Lois Krueger

**Property:** Bob Becher

**Stewardship:** Kris Papke

**Trust Funds:** Sandy Downey, Bob Guse, Lorraine Krueger, Jerry Gierach, Jeff Fischer, Bob Wendtland

**Youth & Family:** Vonna Pitel

**Visioning:** Jeff Fischer, Brad Hallmark

**Web Site Committee:** Toni Schnorr, Dottie Dorr, Kathy Thiele, Alisa Norquist



*But Joseph said to them, "Do not be afraid! Am I in the place of God?"*

*Genesis 50:19*

I recently discovered a helpful essay about Christians and Muslims written by Paul Martinson, a professor when I attended seminary. He recalled a confrontation while speaking at a dialogue between Christians and Muslims many years ago. A member of the audience angrily challenged him about violence perpetrated by Christians (this was long before the events of September 11, 2001). Professor Martinson acknowledged the failure of Christians to always live up to Jesus' mandate of love, and concluded by saying "Yes, we Christians have much for which to repent. But I think both Christians and Muslims have much for which to repent. That is why we both need a God of mercy!" He writes, "I was stunned by a hushed 'Ahhhh' that went through the whole crowd. 'Yes', that hush seemed to say, 'that is why we both need a God of mercy'".

This month our nation remembers that terrible day in September ten years ago when so many people died and a clash of very different cultures made an indelible mark on our world. This year, September 11 falls on a Sunday. Interestingly, the lessons for that day all speak of forgiveness. This central tenet of Christianity continues to perplex many, especially in the face of injustice, violence and fear. Is forgiveness even appropriate for things like these?

Such strong feelings illustrate the power we may intuitively sense here. Forgiveness does not negate justice, but does have the power to free us from prisons of hate, vengeance and terror. God promises that justice will be done, but justice does not have this same power. We all need a God of mercy. Joseph's reply to his brother's desperate appeal for forgiveness after all they had done to him illustrates what can happen when this need is realized: We are not in the place of God but all stand in need of mercy. As we receive mercy from God, even incarnate love that suffers and dies for us, we are set free to live in a new way, opened to the possibilities of truth, reconciliation and peace. From what can such mercy set you free?

God's peace,  
*Pastor John*



## Mission of the Month - Luther Manor

*Each month our congregation emphasizes a particular outreach ministry. You are invited to support these ministries in whatever way your heart moves you.*

*Contributions can be given in Mission of the Month envelopes found in your contribution envelope box or in the white envelopes in the church pews.*

Our Mission of the Month for September, Luther Manor, has been caring and advocating for seniors for more than 50 years. Luther Manor is a retirement complex located on North 92<sup>nd</sup> Street in Milwaukee, an adult day center at St. John Lutheran Church in Grafton and a group home, River Oaks, in Thiensville. In addition to independent housing, assisted living and long term care options, Luther Manor offers rehabilitation, adult day and supportive services, hospice care and community outreach programs.

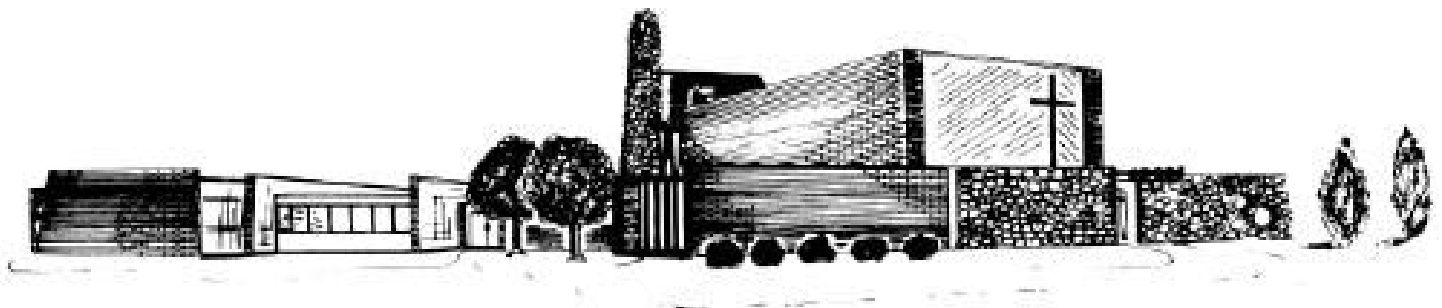
You can support this ministry through **Friends of Luther Manor** (formerly Auxiliary). Annual dues are \$5.00 (Contributions above that are welcome and appreciated), and paying your dues is all that is required. Someone will be in the narthex after the service on Sundays in September to receive your membership donation (dues). This year contributions will be used to purchase and install automated doors for the Health Care Center entrance and adaptive gardening areas (raised beds that are wheelchair accessible).

Your **contributions to the September Mission of the Month** will be divided between scholarships to assist persons attending the Lakefield Adult Day Center in Grafton who need financial assistance and the main Luther Manor complex in Milwaukee.

Another way you can support Luther Manor is to **contribute cookies to the Cookie Campaign**. Every weekday volunteers walk through the Health Center and Home at the 92<sup>nd</sup> Street location pushing a cart with coffee and cookies. Residents welcome this treat that always comes with a smile and conversation. This year you can again bring homemade or purchased cookies to church anytime during the month of September. Please mark containers of homemade cookies with "what kind of cookies" and "how many dozen." Soft cookies are best. No nuts please.

Include caregivers and those who need care in **your prayers** and support Luther Manor's ministry to older adults in whatever way you can during September.

If you would enjoy **spending a little time** with older adults or **sharing a hobby or interest**, Lakefield Adult Day Center would welcome your help. Daily attendance now averages 20 persons per day. (Talk to Joyce Christie and she will be happy to arrange it.)





## FAITH TRUST FUNDS, OUR LEGACY -- TODAY - TOMORROW - THE FUTURE

Throughout the past four years, these articles have taken a variety of “focuses” including: the history of the Trust Funds, highlights of the donations to the Trust Funds, investments of the Trust Funds, the receivers of the Trust Funds. While all of these areas continue to be important information, there is another “focus” area that needs to be highlighted – that of the “Distributions and the Purposes” of those distributions.

The Benevolence Fund was established for the “primary purpose --- to enhance the benevolent mission of this (Faith) congregation.” According to the Resolution established to set guidelines of the funds, there are four areas for distribution:

- ◆ Missions of the ELCA at home and overseas.
- ◆ Outreach to the community
- ◆ Scholarships or grants
- ◆ Major capital acquisitions and improvement projects or building programs of this congregation
- ◆

Details of each of these have been described in past FOCUS articles and are readily available in the Trust Fund booklet. At this time, it seems to be a good time to describe not *what* the above areas are but rather *how* they are distributed.

During each calendar year, the Trust Funds committee follows the guidelines as described in the Resolution. Decisions about the distribution are in large part based on requests from individuals or groups.

It is important that each request be presented to the Trust Funds Committee in writing. The Trust Funds committee generally meets once a month. The request may be given to the Pastor or to a committee member or may be presented to the committee in person at a scheduled meeting. The Trust Funds committee will discuss the request at the first meeting possible. The Resolution defines that each request be discussed at one meeting and voted on at the next meeting. Any questions about this procedure? – please check with a committee member or Pastor John.

Remember, the Trust Funds was set up to be used for those needs that can not be undertaken within the annual operating budget of the Church. If you or someone you know has a need, falling in this category, please feel free to contact us. It is important to remember that this is a benevolent mission fund of this congregation. It is available to reach out to the four areas listed earlier.

Trust Fund committee: Sandy Downey, Jerry Gierach, Bob Guse, Lorraine Krueger, Bob Wendtland. Any questions/comments? Please contact any one of us.



## YOUTH AND FAMILY MINISTRY UPDATE

A BIG THANK YOU to the members of Faith who helped with another successful VBS week at Faith. Thank you to Amy Canapa for leading the team, also to Dustin Dahlman, Dominic Faraglia, Robin Gilbertson, Sydney Hallmark, Andy Schnorr, David Schnorr, Hannah Yurske, Pastor John, Lois Krueger, Lorraine Krueger, Esther Rusch, Vangie Sherman, Carol Bury, Joan Dorsey, Sandy Downey, Lucille Becker, Connie Dahlman, Judy Johnson, Vonna Pitel and Laverne Gresch.

### Activities for the month of September.....

**Rally Day** – Sunday, September 11th, New Mentor/Mentee Teams will be yoked at the church service. After the service parents can register their children for Sunday school.

**Rally Day Picnic** – The Mentor/Mentee Teams are coordinating a picnic for Rally Day scheduled for Sunday, September 11th at 11:00am. There will be good food, fellowship and games. Please sign-up in the narthex or call Toni Schnorr.

**Women's Retreat** – September 9th & 10th. More information is enclosed.

**Pine Ridge Pot Luck** – Sunday, September 25th at 4:00pm to be held at St. John in Grafton. The participants of the Pine Ridge Servant Trip this summer will share pictures of their experience. St. John will provide the main course, Faith will provide the desserts and Immanuel will provide the salads. Come learn about what life is like at the Pine Ridge Indian Reservation.

### Activities scheduled for October.....

**Confirmation Sunday** – October 23rd. The following youth will be confirmed: Eric Dahlman, Sydney Hallmark and Kyle Polum.

**Lutheran College Tour** – October 27th – 29th. This is a great way to visit some college campuses and start learning what college life is all about. All youth who are in 10th, 11th and 12th grade are welcome. The cost is only \$35.00. For more information contact Toni Schnorr.

**Youth Gathering – 2012** – Mark your calendars for an event you will not want to miss. The ELCA Youth Gathering only happens every three years. The event is scheduled for next year July 16th – July 24th. We are planning to take the train to New Orleans where we will have opportunities to do service projects, listen to great bands and speakers, learn and hang-out with 36,000 other youth from around the United States. Stay tuned for more information coming out soon.

Heading off to College, Technical School or the Military:

Please complete the address form that is enclosed. Student Care Packages will be sent in December.

Please know that I'm very open to your input and assistance. Stop-in to see me or give me a call at (262) 377-0960 ext, 204 or email me at [faithchurchtoni@wi.rr.com](mailto:faithchurchtoni@wi.rr.com)



## Get Proactive with Brain Health

Your mind is your most important asset – more important than your house, your bank account, and your stock portfolio. You can insure your house and work hard to pad your bank account, but what can you do to sharpen your mind and protect it from decline? With the aging of America, an increasing number of people are asking this question. Modern-day science provides a clear answer: Protect your mind by protecting your brain.

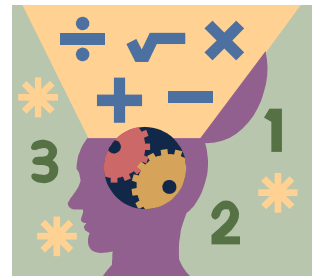
In the past it was believed that an adult brain can only lose nerve cells and cannot acquire new ones. Modern-day science has established that neurons and new connections between neurons continue to develop throughout our lives, even well into advanced years.

Recent scientific studies show that the brain responds to diverse and vigorous mental challenges. The impact of cognitive activity on the brain can actually increase the size of the brain. With this in mind, try a few of these mental fitness exercises:

Alphabetize the months of the year in your mind

Do something with your non-dominant hand (shuffle a deck of cards, do your hair, practice your signature)

Practice spelling words backwards



Faith Church is privileged to offer a six -week course on Brain Health on Mondays beginning on October 17. The series of classes will meet in the church library at

4:00 to 5:15 P.M. or 6:30 to 7:45 P.M. Each class will be open to 10 to 20 adults. Cost for the course is \$60. All materials will be provided. Topics will include: Can Memory be Improved? Myths About Aging, How the Brain and Memory Work, Nutrition, The Heart and Brain, and Memory Techniques and Mental Fitness Exercises.

The course will be led by Dawn Adler, Manager of Adult Day Services at Luther Manor in Wauwatosa. Dawn has 27 years experience in Long-Term Care and Adult Day services and has been involved in numerous research projects in Cognitive Functioning in Aging and Brain Function Related to Memory.

Dawn will give a brief preview of the course during the worship service here at Faith on Sunday, September 18, and will present more information about the course and answer questions at the Adult Forum at 10:15 that same morning. Come and learn more about this important topic.

If you would like more information or would like to register for the course, contact Joyce Christie (262-377-0653, email: [joycetom1936@sbcglobal.net](mailto:joycetom1936@sbcglobal.net)).



## FREE TO LIVE WELL A Fall Afternoon Bible Study

You are welcome to explore two remarkable letters with friends and guests who gather here at Faith Lutheran Church, from 2:00 to 3:00 p.m. each Tuesday for six weeks, from September 13th to October 18th. Dale Erickson will lead a discussion of the New Testament books of Galatians and Ephesians—both attributed to the Apostle Paul—that spell out a positive view of life in challenging times. We will cover two chapters each week to complete the series. People of all backgrounds are welcome. Consider inviting guests. Materials and the course will be provided at no cost, except for your time and engagement with the ideas that are shared. Mark your calendar and plan to attend. Sign-up sheet and materials are in the Library area.

---

### COMING TO THE ADULT FORUM ON SUNDAY OCTOBER 16

Plan on joining us for a discussion of the book, "*ONE SIMPLE ACT: DISCOVERING THE POWER OF GENEROSITY*," by Debbie Macomber.

*What if you, personally, could make the world a better place . . . by tomorrow?*

Debbie Macomber knows the secret to doing exactly that! In a world that too often seems stingy and grudging, she has witnessed how one simple act of generosity can yield unforeseen miracles.

You are about to discover, through true stories, what happens when we commit intentional acts of generosity... You will stand amazed at what God accomplishes when we make ourselves available through simple acts of generosity.

Books may be ordered through the church office or by contacting Esther Rusch (262-375-0868). Cost is \$10.84. Deadline for group order is Sunday, September 25.

**Lutheran Connection:** Save your August issues of The Lutheran for a discussion on the article "Sabbath" by Wayne Muller. Amy Canapa will lead the discussion on Oct. 2 with a possible book study to follow.

**Office Hours**  
**Tuesday—Thursday**  
**9:00 - 2:00 pm**  
**Friday**  
**9:00-Noon**



**NURSERY:**

**September 4:** Catherine Guse & Kayla Fischer  
**September 11:** Mariah Butler & Dominic Faraglia  
**September 18:** Jessica Struhar & Family  
**September 25:** Amy Fischer & Brenna Fischer

**LOCK-UP**

**September 4:** Kris Papke  
**September 11:** Kris Papke  
**September 18:** Kris Papke  
**September 25:** Kris Papke

**USHERS:**

**Team 3**

Captain: Aaron Gresch

**COMMUNION SET-UP:**

Cindy Dellegrazio

&

Dottie Dorr

**BULLENTINS**

**September 4:** Lucille Matter  
**September 11:**  
**September 18 :** Nancy Lange  
**September 25:** Eunice Paulin

**ALTAR FLOWERS:**

**September 4:**  
**September 11:**  
**September 18 :**  
**September 25:**

**Bible Readings**

**Sunday, September 4, 2011**

12th Sunday after Pentecost  
 Ezekiel 33:7-11  
 Psalm 119:33-40; refrain, Ps. 119:35  
 Romans 13:8-14  
 Matthew 18:15-20

**Sunday, September 11, 2011**

13th Sunday after Pentecost  
 Genesis 50:15-21  
 Psalm 103:8-13; refrain, Ps. 103:8  
 Romans 14:1-12  
 Matthew 18:21-35

**Sunday, September 18, 2011**

14th Sunday after Pentecost  
 Jonah 3:10-4:11  
 Psalm 145:1-8; refrain, Ps. 145:8  
 Philippians 1:21-30  
 Matthew 20:1-16

**Sunday, September 25, 2011**

15th Sunday after Pentecost  
 Ezekiel 18:1-4, 25-32  
 Psalm 25:1-9; refrain, Ps. 25:6  
 Philippians 2:1-13  
 Matthew 21:23-32

### SEPTEMBER BIRTHDAYS

9/1	Bruce Anderle	
	Aaron Caldwell	9-2-07
9/2	James Eurich	9-4-88
9/4	Whit Lehnberg	9-6-89
	Eric Schwengel	9-7-78
	Deborah Trupke	9-9-61
9/5	Alda Rappold	9-9-89
9/7	Gerri Noack	9-12-70
9/9	James Canapa	9-20-86
	Heather Contresceri	9-21-75
9/14	Rebecca Blau	9-26-06
	John Grosklaus	9-30-01
	Chuck Thiele	
9/15	Kyle Polum	
9/17	Nancy Lange	
	Ashton Steinert	
9/18	Joyce Christie	
	Siegmar Voss	
9/20	Christina Thiele	
9/21	Beverly Yurske	
9/24	Diane Fischer	
	Philip Paige	
9/25	Myron Lange	
9/29	Dustin Dahlman	
	Lucinda Meade	
9/30	Dareen Abu-Fares	

### SEPTEMBER ANNIVERSARIES

Patrick & Ryanne Lee	4 years
Gregory & Connie Dahlman	23 years
Sal & Cynthia Faraglia	22 years
Herb & Carol Neuer	33 years
Myron & Barbara Lange	50 years
John & Antonia Schnorr	22 years
Siegmar & Cheryl Voss	41 years
Bruce & Debra Rappold	25 years
Steve & Cynthia Hoogester	36 years
Megan & Brian Axtell	5 years
Bradley & Shannon Diamond	10 years



OUR PRAYERS are invited for Jim Gresch, Bill Duff (Dottie Dorr's brother), Andrew (Jacquie Becher's nephew), Ray Weber (Diane's husband and the Dorr's neighbor), Tony Navarre (a teacher at Homestead H.S.), Luke (son of Joan Dorsey's friend), Ben (Gerri Noack's grandson), Howard Clausing (Dottie Dorr's brother-in-law), Molly Curry (Rick Struhar's cousin), Barbara Garnarcz (Jessica Struhar's aunt), Leonard (friend of Hammam), Dujana (Hanady's mother), Glenn & Margaret Severinsen (friends of Al Gresch), Karen (good friend of Kathy Thiele's), Kathleen Schnorr (John's mother), Kathy Wildes (H.S. friend of Kathy Thiele's), Margaret Radke; for all in military service, especially Chaplin Brady Eggleston, Paul Brissman (Vera's son), Chris, Jacob Elbe (Hal & Vangie Sherman's grandson); for all those in mission work, especially Pam Schwalbach and Emily Sear.

Names will stay on our prayer list for one month. If you would like your loved one or friend on longer, you will have to let the office know.

THE MINUTES FROM  
COUNCIL MEETINGS  
CAN BE FOUND ON THE  
BULLETIN BOARD  
IN THE  
NARTHEX.

**WEB SITE FOR FAITH** is live. Please take some time to make a visit. Our Web Site address is the same as before [www.faithlutherancedarburg.com](http://www.faithlutherancedarburg.com).

We will continue to expand our Web Site so if you have any suggestions or ideas contact Alisa Norquist, Dottie Dorr, Toni Schnorr, Kathy Thiele .



September, 2011

**STUDENT CARE PACKAGES WILL BE SENT TO  
THOSE WE HAVE ADDRESSES FOR**

WE NEED THE COMPLETE ADDRESS OF OUR COLLEGE AGE YOUNG ADULTS, PLUS THE COLLEGE / UNIVERSITY / TECH SCHOOL / MILITARY ETC. THEY ARE ATTENDING. PLEASE FILL IN THE FORM BELOW AND RETURN IT TO THE CHURCH OFFICE. WE WANT TO STAY IN CONTACT WITH ALL OF OUR YOUNG ADULTS. THANK YOU!

NAME \_\_\_\_\_

YEAR IN SCHOOL \_\_\_\_\_

NAME OF SCHOOL OR BRANCH OF SERVICE \_\_\_\_\_  
\_\_\_\_\_

MAILING ADDRESS \_\_\_\_\_

ROOM/APT NUMBER \_\_\_\_\_

CITY \_\_\_\_\_

STATE \_\_\_\_\_ ZIP CODE \_\_\_\_\_

EMAIL \_\_\_\_\_

Please complete this form and return to Toni Schnorr or email the information to [faithchurchtoni@wi.rr.com](mailto:faithchurchtoni@wi.rr.com) by September 30<sup>th</sup>